



WARNING To The Users of Vehicle Straps



The **WARNING** icon, used in our product information is done to alert sling users to potentially hazardous conditions and situations.

WARNING It is your explicit responsibility to consider all risk factors prior to using any rigging device or product. Read and understand the information contained in this bulletin, in our catalog, on our website www.lift-it.com and follow OSHA and ASME guidelines. Use by untrained persons is hazardous.

The American Society of Mechanical Engineers, in the ASME B30.9 Sling Safety Standard, clearly establishes the requirement for training. Section 9-5.1-Training states, "Synthetic webbing sling users shall be trained in the selection, inspection, cautions to personnel, effects of the environment and rigging practices, covered by this chapter."

WARNING All Products provided by Lift-It® Manufacturing Co. Inc. are sold with the express understanding that the purchaser and user are thoroughly familiar with the safe and proper use and application of the product. The user has the responsibility for proper use and application as outlined in all applicable standards and regulations. Use by untrained persons is hazardous. It is important that all sling and rigging users be thoroughly familiar with the manufacturer's recommendations and safety information that accompany the products. The user must have sufficient training and knowledge of all applicable standards to responsibly use our products. If you are unsure whether you are properly trained and knowledgeable or if you are unsure of what the standards and regulations require of you, ask your employer for information and/or training. **DO NOT** use any sling or rigging device until you are absolutely sure of what you are doing. Remember, when it comes to using slings and rigging devices, lack of skill, knowledge and care can result in severe INJURY or DEATH to you and others.

WARNING Failure to follow proper use, care and inspection criteria could result in severe personal injury or death. Slings and rigging products will fail if damaged, abused, misused, overused or improperly maintained.

- Any hazardous condition disclosed by an inspection shall require sling replacement. Temporary repairs are not permitted. Damage and wear seriously reduce vehicle strap work load limits.
- Always know the load weight and select the appropriate vehicle strap for the load.
- Ensure that the load will not cut the vehicle strap during use by padding corners, edges, protrusions or abrasive surfaces with suitable materials of sufficient strength, thickness and construction.

WARNING

Inspect before each use. Do not use a damaged strap. Avoid dragging the strap. Do not tie strap into knots. Do not attach strap to bumpers. Avoid contact with hot exhaust systems. Do not exceed Strap Work Load Limits. Attachment points must be suitable for the application and should exceed the break strength of the strap. Detached connection points can become deadly projectiles. Stand far away from the vehicle and strap while under tension. Never stand near or in line of a strap under tension. **DO NOT SHOCK LOAD THE STRAP.** You must take into account all factors such as suction and incline to ensure that you maintain control of all materials and components used for recovery, including dynamic loading and tension. If you are not capable of determining loading factors, use load measuring devices or equipment controls to avoid overloading. If these options are not available, **DO NOT USE THE VEHICLE STRAP.** IMPROPER USE MAY RESULT IN INJURY, DEATH AND/OR PROPERTY DAMAGE. Avoid edges or surfaces that could damage the strap. Use protection to prevent damage to the strap. Store strap in a cool, dark, dry location, free of environmental and mechanical damage.

Remove the strap from service and do not use for any application, if any of the following are visible:

Acid or Caustic Burns, Melting or Charring of any part of the strap, Ultraviolet/Sunlight Damage, Broken or worn stitching, Excessive Abrasive Wear, Holes, Tears, Cuts, Snags or Punctures and/or other visible damage that causes doubt as to the strength of the strap.

Lift-It Manufacturing Co., Inc.

1603 West 2nd Street, Pomona CA 91766

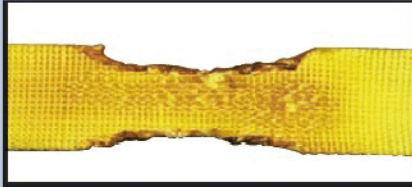
Ph 909.469-2251 • Fax 909.469-2252 • Email: info@lift-it.com • Website: www.lift-it.com

Vehicle Strap Inspection



WARNING

If any damage such as the following is visible, the vehicle strap shall be removed from service immediately. Photos depict examples of vehicle strap damage, but note they are extreme examples provided for illustration purposes only.



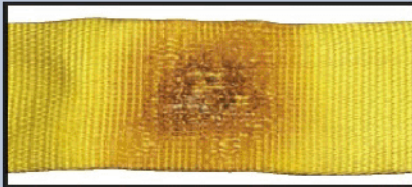
ACID OR CAUSTIC BURNS



CUT



EDGE CUT



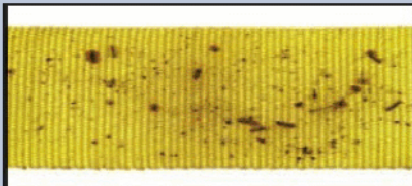
MELTING OR CHARRING



ABRASIONS



PUNCTURE



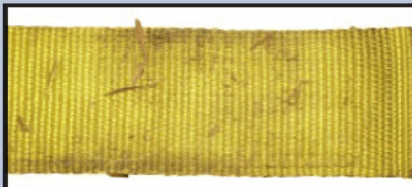
WELD SPATTER



BROKEN OR WORN STITCHING



DAMAGED EYE



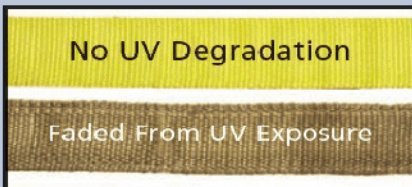
EMBEDDED MATERIALS



TENSILE BREAK



MISSING OR ILLEGIBLE TAG



UV DEGRADATION



RED CORE YARN



KNOT



CRUSHED WEBBING



SNAG



DAMAGED HARDWARE

Lift-It Manufacturing Co., Inc.

1603 West 2nd Street, Pomona CA 91766

Ph 909.469-2251 • Fax 909.469-2252 • Email: info@lift-it.com • Website: www.lift-it.com